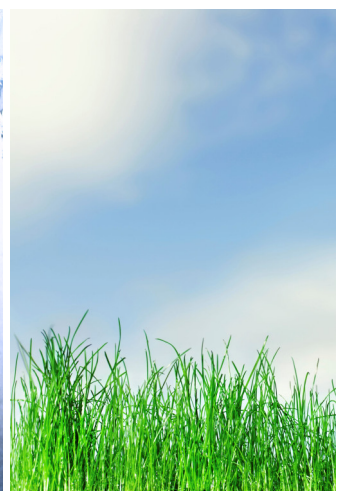


Product Guide

HEAT EXCHANGER PACKAGES HEVAMOD & HEVAMOD L PACKAGES

Inventive Engineering



HevaMod Heat Exchanger Packages



Our HevaMod range of heat exchanger packages are designed with the customer in mind, offering various options to suit each application. The units are supplied as standard with gasketed plate heat exchangers and range from 50 kW up to 2,000 kW as standard, with larger units available if required. The HevaMod units are designed to operate with a primary water medium and have the following options:

HM - 3 port primary control valve and fixed speed pump (single or twin head)

HME - Variable speed primary pump c/w shut-off valve

HMP - 2 or 3 port primary control valve with no pump

The Arbe range of HevaMod packaged plate heat exchangers offer a compact and economical solution for heat transfer requirements. Used to provide heat generation in addition to providing pressure breaks in a system, the HevaMod range is a simple solution to any project specifications, which can be adapted to suit specific requirements with additional equipment integrated within the package.

- Dedicated ranges for domestic hot water production, heating water production (LTHW, MTHW & HTHW) & chilled water production
- Standard units with duties from 30 kW to 2000 kW, with special models available up to 10,000 kW
- Standard units with a programmable PLC controller with optional modules for BACnet, Trend & MODbus output & control
- As standard, the unit is supplied with multiple outputs and the unit also has a pasteurisation setting available
- Small unit size with high heat transfer capacity
- High resistance to pressure and temperature fluctuations
- Cost efficiency
- Stainless steel connections
- Easy installation

Applications:

- Domestic hot water
- Heating systems (LTHW, MTHW & HTHW)
- Cooling systems
- Solar and Geothermic Heating
- Industrial Process Heat recovery
- Condensers and evaporators in refrigeration systems
- Oil coolers
- Close approach fluid-to-fluid heat transfer

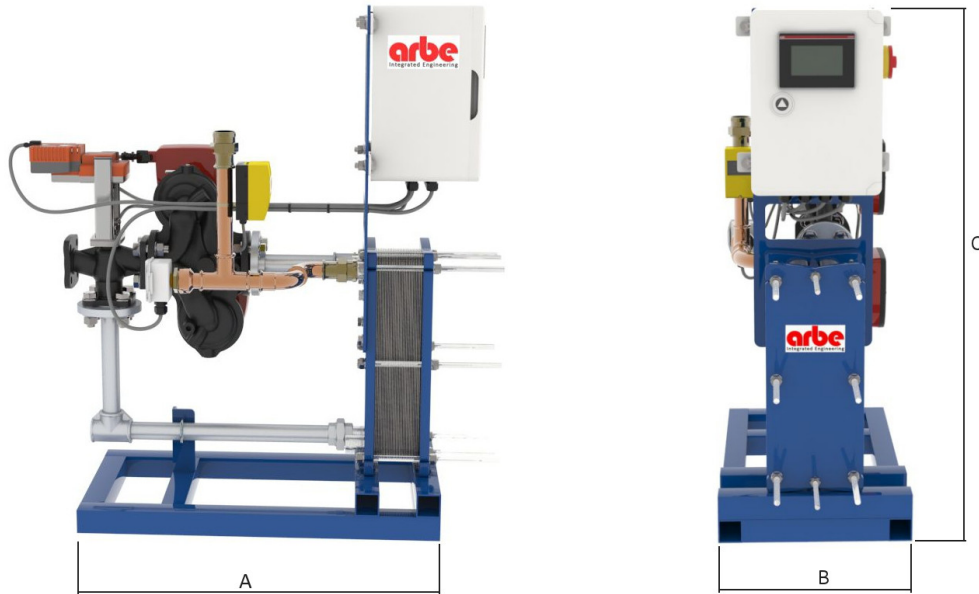


Twin Primary - Single Secondary



Single Primary - No Secondary

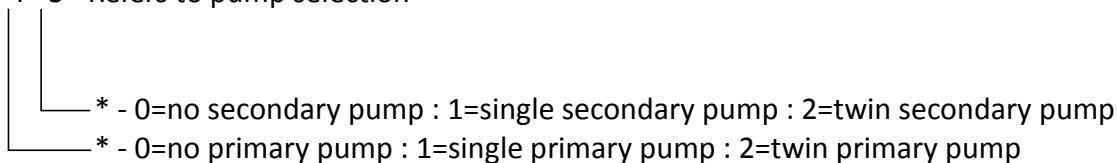
HevaMod Heat Exchanger Packages



Model	Duty kW	Primary Flow Litres/Second	Secondary Flow Litres/Second	Pri Excess Pump Pressure	Sec. Pressure Drop (kPa)	Dimensions		
						A	B	C
HM50-*P*S	50	0.40	0.24	18.0	3.9	900	550	1075
HM75-*P*S	75	0.60	0.36	16.0	4.8	900	550	1075
HM100-*P*S	100	0.79	0.48	15.0	5.3	900	550	1075
HM125-*P*S	125	0.99	0.60	16.0	5.8	900	550	1075
HM150-*P*S	150	1.19	0.72	15.0	6.2	900	550	1075
HM200-*P*S	200	1.59	0.96	18.0	6.8	900	550	1075
HM250-*P*S	250	1.99	1.19	20.0	7.4	900	550	1075
HM300-*P*S	300	2.38	1.43	19.0	8.5	900	550	1075
HM350-*P*S	350	2.78	1.67	22.0	9.1	900	550	1075
HM400-*P*S	400	3.18	1.91	16.0	19.0	900	550	1075
HM450-*P*S	450	3.57	2.15	16.0	18.2	1100	650	1450
HM500-*P*S	500	3.97	2.39	18.0	18.6	1100	650	1450
HM600-*P*S	600	4.77	2.87	20.0	17.6	1100	650	1450
HM700-*P*S	700	5.56	3.34	15.0	19.8	1100	650	1450
HM800-*P*S	800	6.36	3.82	16.0	19.6	1100	650	1450
HM900-*P*S	900	7.15	4.30	18.0	19.2	1100	650	1450
HM1000-*P*S	1000	7.94	4.78	19.0	19.3	1100	650	1450
HM1100-*P*S	1100	8.74	5.25	22.0	19.4	1400	800	1600
HM1250-*P*S	1250	9.93	5.97	21.0	18.6	1400	800	1600
HM1500-*P*S	1500	11.92	7.17	20.0	19.4	1400	800	1600
HM1750-*P*S	1750	13.90	8.36	16.0	18.0	1400	800	1600
HM2000-*P*S	2000	15.89	9.55	18.0	18.5	1400	800	1600

Selection

*P*S - Refers to pump selection



HevaMod-L Heat Exchanger Packages



Our HevaMod-L range of heat exchanger packages are designed for economical requirements, offering a simple and effective solution. The units are supplied as standard with gasketed plate heat exchangers and range from 50 kW up to 2,000 kW as standard, with larger units available if required. The HevaMod units are designed to operate with a primary water medium and are supplied with an electro-proportional 3-port primary control valve and fixed speed pump (single or twin head) and can be supplied with or without a secondary shunt pump

The Arbe range of HevaMod-L packaged plate heat exchangers offer a compact and economical solution for heat transfer requirements. Used to provide heat generation for potable water solutions, the HevaMod-L range is a simple solution to any project specifications, which can be adapted to suit specific heat output requirements

- Dedicated range for domestic hot water production
- Standard units with duties from 52 kW to 582 kW
- Standard units with electrical motor protection and temperature control by the electro-proportional control valve with a programmable anti-legionella pasteurisation setting
- Small unit size with high heat transfer capacity
- High resistance to pressure and temperature fluctuations
- Cost efficiency
- Stainless steel connections
- Easy installation

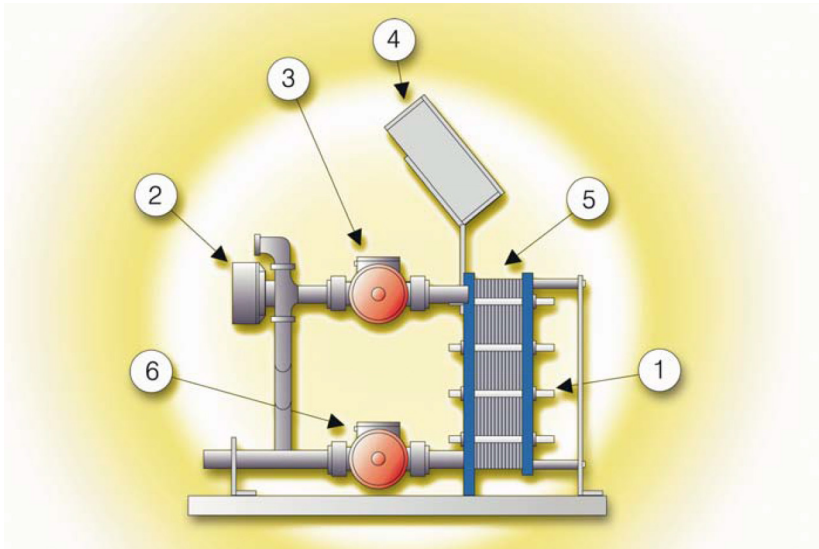
Applications:

- Domestic hot water
- Process hot water

Please contact our technical office with any technical queries, with regards to applications and installation



HevaMod-L Heat Exchanger Packages



Components:

1. Heat exchanger frame
2. Mixing valve
3. Primary pump
4. Electrical panel
5. Heat exchanger plates
6. Secondary pump

Dimensions:

- A - Overall length
- B - Overall height
- C - Overall width

Model	Duty kW	Primary Flow Litres/Second	Secondary Flow Litres/Second	Pri Excess Pump Pressure	Sec. Pressure Drop (kPa)	Dimensions		
						A	B	C
HM-L-43-15-***	53	0.63	0.25	12.0	10.0	700	420	800
HM-L-43-21-***	105	1.25	0.50	14.0	10.0	700	420	800
HM-L-43-27-***	126	1.50	0.60	15.0	10.0	700	420	800
HM-L-43-33-***	152	1.81	0.73	16.0	10.0	700	420	800
HM-L-43-41-***	177	2.11	0.85	15.0	10.0	700	420	800
HM-L-150-18-***	233	1.85	1.11	13.0	13.0	1000	700	1200
HM-L-150-21-***	291	2.31	1.39	14.0	13.0	1000	700	1200
HM-L-150-25-***	349	2.77	1.67	14.0	14.0	1000	700	1200
HM-L-150-29-***	408	3.24	1.95	14.0	14.0	1000	700	1200
HM-L-150-33-***	466	3.70	2.23	16.0	18.0	1000	700	1200
HM-L-150-37-***	524	4.16	2.50	18.0	18.0	1000	700	1200
HM-L-150-41-***	582	4.62	2.78	18.0	19.0	1000	700	1200

Selection

**F - Refers to pump selection

- F - refers to fixed speed pump
- * - 0=no secondary pump : 1=single secondary pump
- * - 0=no primary pump : 1=single primary pump : 2=twin primary pump

Welcome to Arbe Integrated Engineering

Arbe Integrated Engineering offer a range of products and services for the HVAC building services industry, ranging from bare heat exchangers and storage cylinders to fully packaged plantrooms and associated equipment. With over 20 years of design experience, our design and technical team can offer a complete solution for a wide range of project requirements.

Seamless Integration:

With our next generation range of equipment, our products offer complete integration with renewable and future energies, ensuring all available energy is utilised, reducing fossil fuel usage. In addition, our HevaSys products offers a unique next generation range of equipment with integral BMS style controls that can be adapted to any installation and can provide a standalone management system for buildings where the heating and hot water generation is relatively small, such as a leisure centre or a school.

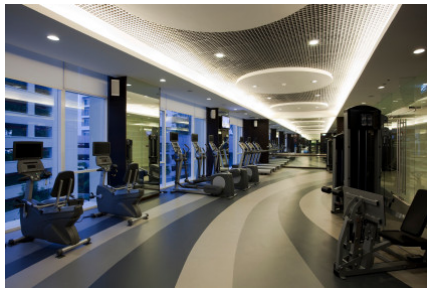
Inventive Engineering:

In addition to our standard equipment, including heat exchangers, storage calorifiers and packaged solutions, we also design and manufacture bespoke equipment to end user or consultant specifications and we carry out extensive research and development to invent new products and enhance current designs.

Application Solutions:

With our complete range of products, we have solutions to cover most applications. With our ability to carry out complete bespoke design, we have a solution for each and every project requirement. Our end users include:

- Hotels
- Schools
- Universities
- Leisure Centres & Gyms
- Hospitals



Products Include:

Calorifiers
Indirect Cylinders
Direct Cylinders
Thermal Stores
Pressure Vessels
Plate Heat Exchangers
Braze Heat Exchangers
Shell & Tube Exchangers
Heat Exchanger Packages

TwinHeat DHW/LTHW Systems
Gas Fired Calorifiers
Boilers & Associated Equipment
Packaged Boiler Houses
Packaged Plant Rooms
Solar Energy Packages
Heat Pumps
Booster Sets & Pressurisation
Bespoke Engineering Packages

Suitable for Heating Systems
Suitable for Potable Systems
Suitable for Chilled Systems
Suitable for Steam Systems
Suitable for Renewable Systems
Suitable for Boosted Water Systems

Key to product Suitability



Arbe Integrated Engineering Ltd
Coal Lane
Causeway Foot
Halifax, HX2 9PG
Tel 01422 646865, Fax 01422 500018
mail@arbe.co.uk www.arbe.co.uk